

# EXHAUST PURIFICATION



## THE EXILENCER™

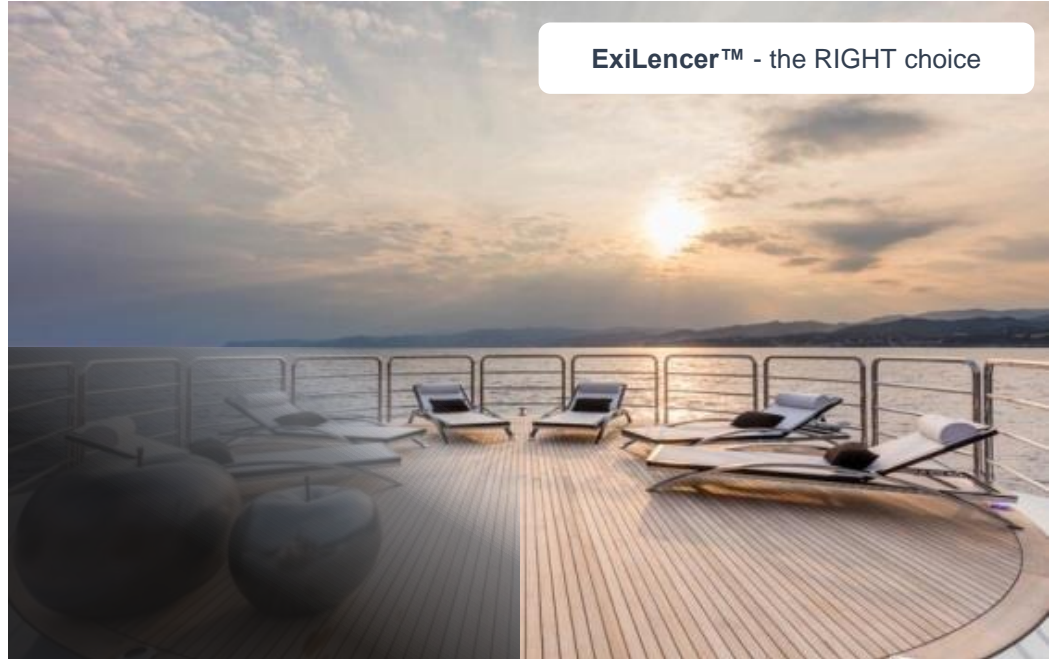
FOR GREATER  
COMFORT AND  
CLEAN AIR

PASSIVE  
EXHAUST  
SYSTEM

REMOVING  
SOOT,  
FUMES &  
CARBON  
MONOXIDE

REDUCING  
LOW & HIGH  
FREQUENCY  
NOISE &

NITROGEN  
OXIDES - NO<sub>x</sub>



ExiLencer™ - the RIGHT choice

Exhaust gasses can ruin any trip on a yacht – Soot, oily water and smell often cause complaints from families, friends and guests, and are likely also annoyed about the multiple hours spend on cleaning.

The Exilator™ “crew” has worked ambitiously and passionately for years to develop and produce an award winning solution, so you can enjoy the comfort and luxury of clean air – all the time.

Exilator™ has 3 generations of emission and silencer knowledge, and uses well proven technologies from the automotive, mining and space industries, to ensure a pleasant and comfortable journey for everyone.

Exilator™’s passive exhaust purification system, **ExiLencer™**, cleans the air, and protects your yacht and the environment.

The **ExiLencer™** is a combination of 3 technologies:

1. A silencer.
2. **ExiBlock™**, with licensed coating developed by NASA.
3. A special NO<sub>x</sub> catalyst.

**ExiLencer™** purifies the exhaust by eliminating:

- 98% of the black soot.
- 99% of the carbon monoxide.

In addition the exhaust system noise is reduced with ca. 35dB.

ExiLencer is the RIGHT choice, for those who can afford the luxury of clean air.

# EXHAUST PURIFICATION

## THE EXILENCER™

FOR GREATER  
COMFORT AND  
CLEAN AIR

PASSIVE  
EXHAUST  
SYSTEM

REMOVING  
SOOT,  
FUMES &  
CARBON  
MONOXIDE

REDUCING  
LOW & HIGH  
FREQUENCY  
NOISE &

NITROGEN  
OXIDES - NO<sub>x</sub>

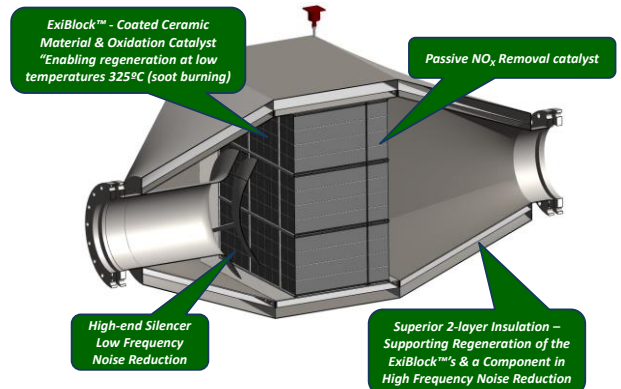
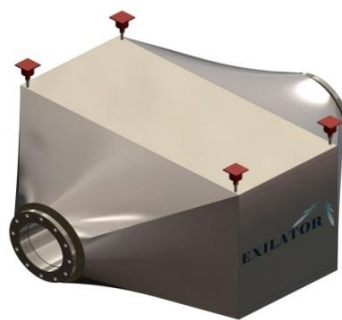
# EXILATOR

**ExiLencer™** continuously ignites and burns black soot (regeneration), when the exhaust gas temperature is above 325°C. The relative low soot ignition temperature is caused by the special coated ceramics, the **ExiBlock™**'s.

The **ExiLencer™** is delivered with a real-time monitoring system, the **ExiBox™**, with the purpose of keeping engineers informed about system performance.

A standard PC display installed in the engine control room, provides clear and visual status of the **ExiLencer™** performance.

The monitoring system stores data locally, always ensuring availability of real-time and historical exhaust data. There is an option to access data remotely.



The passive **ExiLencer™** system is compact and requires little maintenance.

- The **ExiBlock™**'s only needs cleaning once a year or after 5,000 hours of operation.
- The **ExiBlock™**'s are re-used 10 to 12 times or more than 50.000 running hours - for some Yachts, the same **ExiBlock™**'s for a lifetime!
- No active parts → no mechanical wear.
- Annual calibration/verification is offered to ensure **ExiLencer™**'s system integrity.
- The system is made of high grade stainless steel.
- **ExiLencer™** is suited for 4-stroke diesel engines, using low sulphur fuel oil.

The **Exilencer™** system is always optimized to the actual engine size and performance.

Simple design guidelines help defining the right size of the **ExiLencer™**. See our recommendations to the right.

ExiBlock™	Engine size [kW]
1	kW < 125
2	125 ≤ kW < 225
4	225 ≤ kW < 400
6	400 ≤ kW < 575
8	575 ≤ kW < 750
12	750 ≤ kW < 1,250
15	1,250 ≤ kW < 1,700
18	1,700 ≤ kW < 2,150